

DENTISTRY TODAY

THE NATION'S LEADING CLINICAL NEWS MAGAZINE FOR DENTISTS



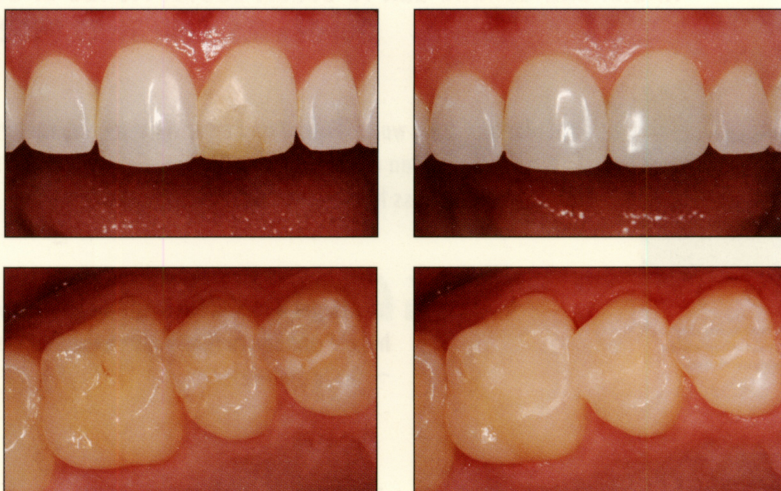
FIRST IMPRESSIONS

In First Impressions, George Freedman, DDS, gives readers a brief summary of products that have recently been introduced to dentistry, based on his clinical experience.

NANOCERAM-BRIGHT

DMP Dental USA

Important characteristics for a successful hybrid restorative material are superior ease of placement, restorative strength, and tooth-blending esthetics. However, there are many other parameters that contribute to the practitioner's clinical achievements, and all of them impact on the selection of a particular product. NANOCERAM-BRIGHT by DMP Dental USA is a light-cured, nanohybrid composite formulated with a special blend of nano- and microfillers. The superior esthetics results from an advanced method for integrating the nanoparticles in the resin matrix. The nanoparticles have an average size of 20 nm, permitting an ultrarapid polish after polymerization and exhibiting very low wear in the long term. NANOCERAM-BRIGHT is indicated for both anterior and posterior direct restorations as well as direct veneers. Its excellent, nonsticky handling is complemented by its ease in sculpting with no slumping. Its particle size blending yields superior marginal integrity and eliminates microleakage, all the while minimizing postoperative sensitivity. Tooth interface longevity is further enhanced by low polymerization shrinkage and high flexural strength. The Composite filler contains a scientifically developed blend of opaque and translucent components to assure a normal vitality. It has enough



Clinical photos courtesy of Ross W. Nash, DDS.

capacity to mask darkness and yet enough translucency to offer a vibrant, natural appearance. NANOCERAM-BRIGHT's chameleon-like properties, along with a comprehensive range of restorative tints, offer excellent shade matching for restorations that literally disappear. The ultrasmall filler particles make the finishing and polishing steps to a highly glossy surface easy and fast. Two kits are available: the introductory 4-syringe kit has shades A2, A3, A3.5, and B; while the 7-syringe kit includes shades A1, A2, A3, A3.5, B2, B3, and C2.

For more information, call (855) 201-0420 or visit the company's Web site at dmpdental.us ♦